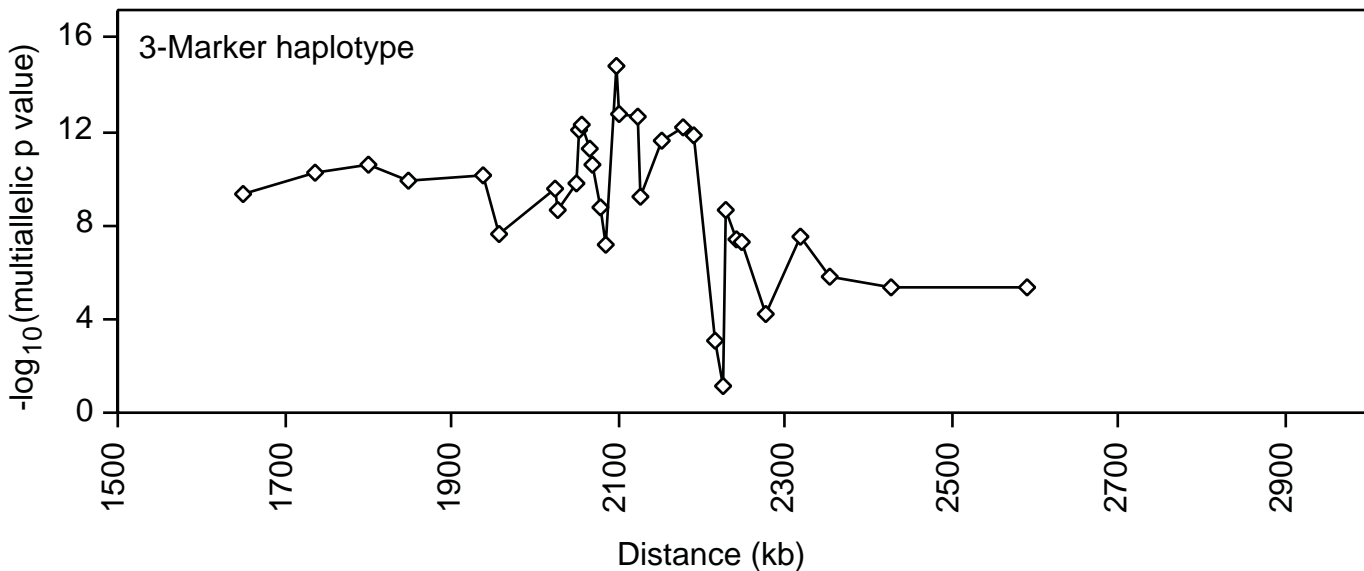
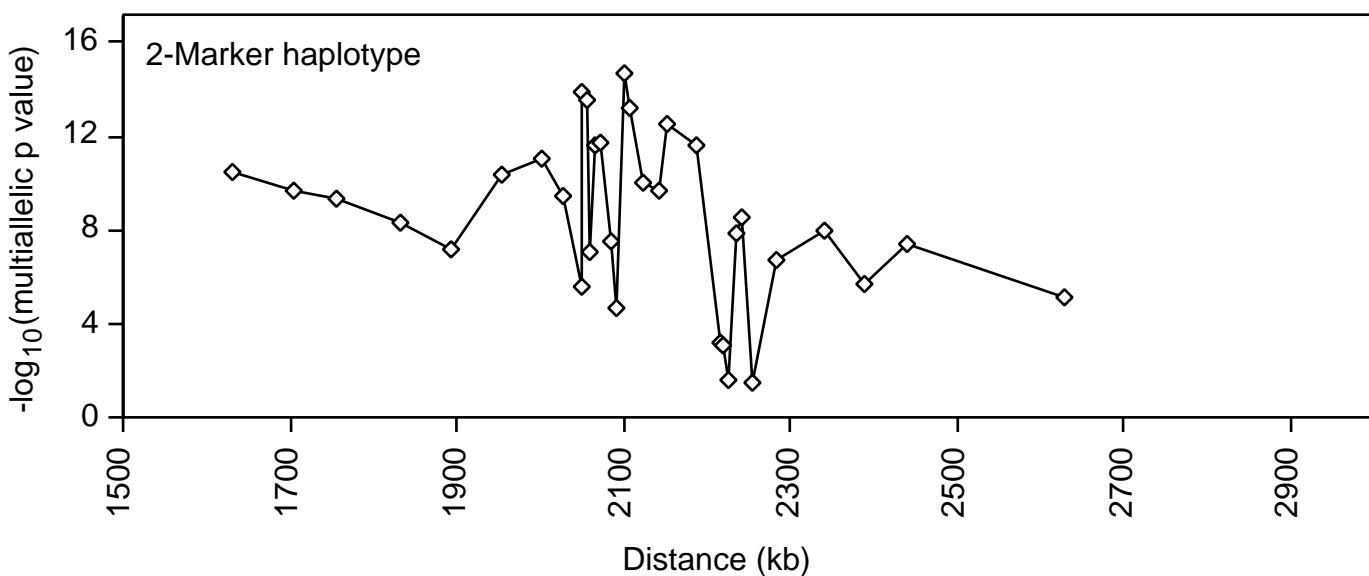
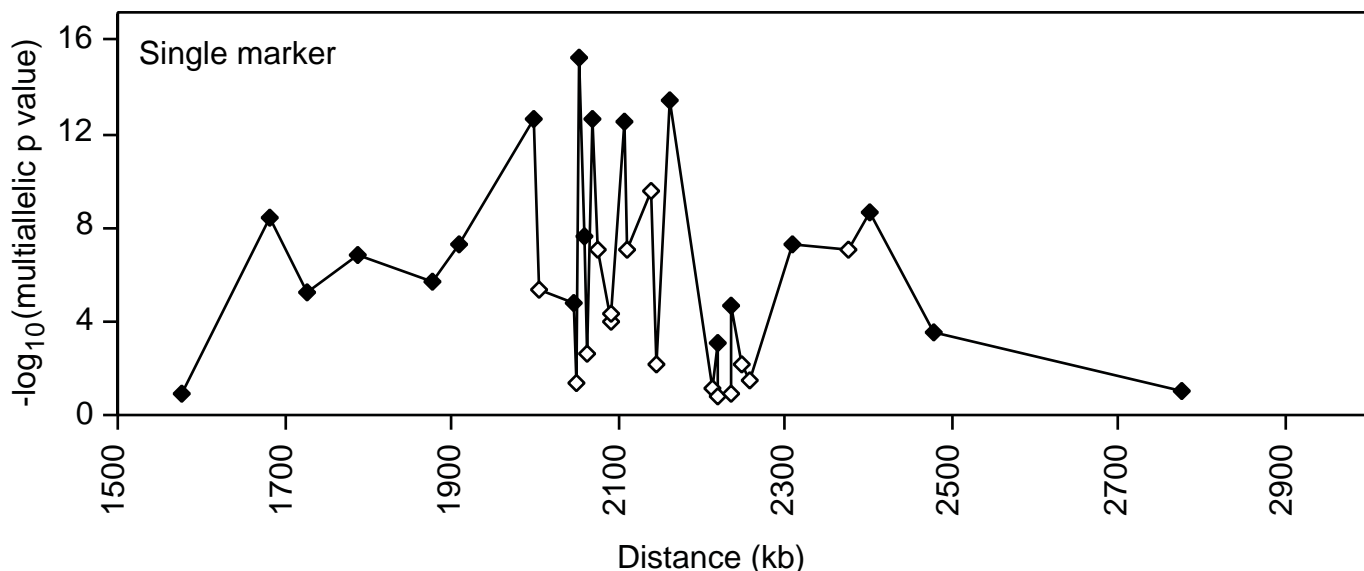


Supplement to Nair et al.,

Localization of Psoriasis Susceptibility Locus PSORS1 to a 60 Kilobase Interval Telomeric to HLA-C.

Multiallelic TDT results for single markers and multi-marker haplotypes using 478 trios.

In the top panel, markers with heterozygosity greater than 0.7 are identified by filled symbols.



Supplement to Nair et al.,
Localization of Psoriasis Susceptibility Locus PSORS1 to a 60 Kilobase Interval Telomeric to HLA-C.
Multiallelic TDT results for single markers and multi-marker haplotypes using 478 trios.

