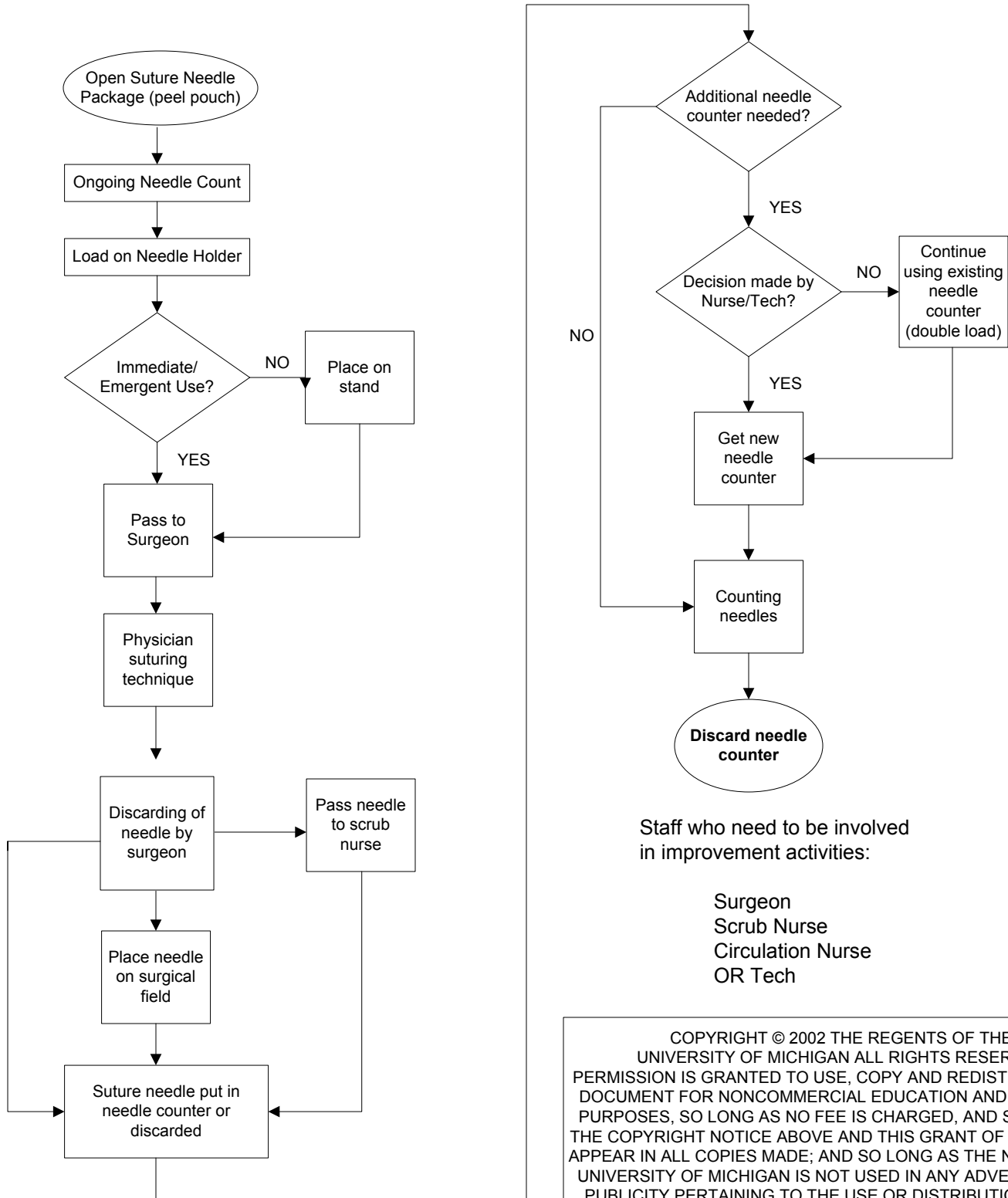


**University of Michigan Hospitals and Health Centers
Infection Control & Epidemiology**

**Flowchart: Use of Suture Needles in the Operating Room
(Example of a process review in order to identify areas for improvement)**



Staff who need to be involved in improvement activities:

- Surgeon
- Scrub Nurse
- Circulation Nurse
- OR Tech

COPYRIGHT © 2002 THE REGENTS OF THE UNIVERSITY OF MICHIGAN ALL RIGHTS RESERVED
 PERMISSION IS GRANTED TO USE, COPY AND REDISTRIBUTE THIS DOCUMENT FOR NONCOMMERCIAL EDUCATION AND RESEARCH PURPOSES, SO LONG AS NO FEE IS CHARGED, AND SO LONG AS THE COPYRIGHT NOTICE ABOVE AND THIS GRANT OF PERMISSION APPEAR IN ALL COPIES MADE; AND SO LONG AS THE NAME OF THE UNIVERSITY OF MICHIGAN IS NOT USED IN ANY ADVERTISING OR PUBLICITY PERTAINING TO THE USE OR DISTRIBUTION OF THIS DOCUMENT WITHOUT SPECIFIC, WRITTEN PRIOR AUTHORIZATION. PERMISSION TO MODIFY OR OTHERWISE CREATE DERIVATIVE WORKS OF THIS DOCUMENT IS NOT GRANTED.